

2024 Jim Depue Race: Sailing Instructions

February 24th, 2024

Presented by the Port Madison Yacht Club

RULES: This event will be governed by this Notice of Race, the Sailing Instructions, the rules as defined in The Racing Rules of Sailing 2021 - 2024, and the Pacific Handicap Racing Fleet of the Northwest (PHRF-NW). Where there is a conflict this Notice of Race and the Sailing Instructions shall take precedence.

ELIGIBILITY AND ENTRY: The regatta is open to all boats. A PHRF-NW certificate is required for Divisions 1 – 4. Boats that are not members of the PHRF-NW may enter Division 5 (Cruising Class) and a club-rating will be assigned by RC

WSSA STANDARD INSTRUCTIONS: All WSSA standard instructions are available in the 2024 WSSA race book shall apply and be amended herein. WSSA Race Book available here: <https://wscyc.net/WSSA>

REGISTRATION: Registration is available via the PMYC home page: <https://www.portmadisonyc.org/> or via the racing / big boat racing page: [Port Madison Yacht Club - Jim Depue Race \(portmadisonyc.org\)](https://www.portmadisonyc.org/racing) Registration will close Feb 23rd Noon.

FEES: Early Bird Registration fees (before Feb 18th, 2024) are \$20. All registrations after Feb 18, 2024 are \$30.

RACE START: Will be in the vicinity of Point Monroe and in accordance with Rule 26. First warning signal will be at (*about?*) 9:55 am. Start times below are for reference only and may change based on conditions. There will be 5 Scoring Divisions, final division breaks will be finalized (*12 hours?*) before the race.

Approximate Start Times (*RC flags + communication will take precedence over any info listed below*):

Start #1: ~10 am

- Division 5: No Flying Sails / Cruising Class (All Ratings)



Start #2: ~10:05 am

- Division 3: “Fully Crewed” (Approx 116 and slower PHRF) **For WSSA scoring this will represent WSSA Div 2**



- Division 4: “Short Handed” (Approx 116 and slower PHRF)

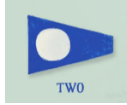


Start #3 ~ 10:10 am

- Division 1 “Fully Crewed”: (Approx 115 and faster PHRF) **For WSSA scoring this will represent WSSA Div 1**



- Division 2 “Short Handed”: (Approx 115 and faster PHRF)

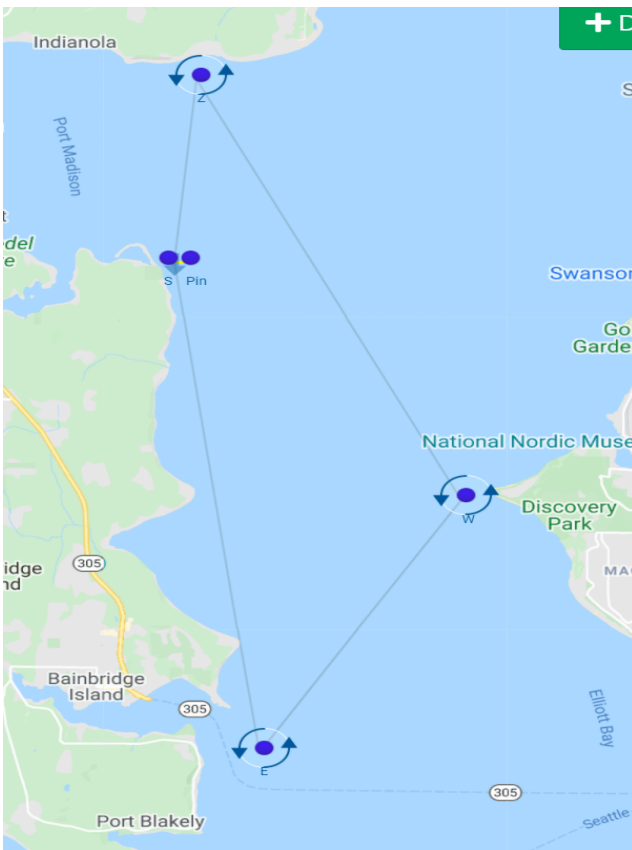


*“Short Handed” = Single or Double Handed Entries

RRS Provision for Shorthanded Division: RRS 52, Manual Power, is amended to include: Boats entered in the shorthanded division are allowed to use autopilot mechanisms for sail changes and other situations where having one crew member assigned to steering the yacht may compromise the safety of crew and craft.

COURSE:

- For *South* wind start: all marks to Port. S - E - W - Z - S
- For *North* wind start: all marks to Starboard. S - Z - W - E - S



SHORTENED COURSE: The course may be shortened at any mark of the course. Monitor signal flags and VHF 72 for shortened course communications. Note: Division can be shortened independently if needed.

SIGNALS:

- A *Southerly course direction* will be indicated by a placard "A".
- A *Northerly course direction* will be indicated by a placard "B".

DISTANCE: ~16.5 nautical miles, course may be shortened at any mark without notification at prior mark.

DESCRIPTION OF MARKS:

- S - Start / Finish line off Point Monroe.
- E - Wing Point Reef Buoy (~47.612 N 122.485 W)
- W - West Point buoy (~47.660 N 122.439 W)
- Z - PMYC Pillar Mark #3 (~47.741 N 122.500 W)

RACE TRACKING: All boats should download and run the **Kwindoo Tracking for Sailing** app (IOS + Android). Remember to have a way of charging your phone / tablet as the app will need to be running throughout the race in order to track your progress/position. Race should be visible in the App as the **PMYC 2024 Jim Depue** in your tracking app.

RACE FINISH: The Finish line will be in a West (RC boat or RC Pin end Mark) to East (Yellow or Orange mark) orientation in the proximity of the start line. It will be visible in the Kwindoo App which will also confirm when you cross this line by your GPS position.

*Please do your best to record your finish time via GPS time and boats finishing ahead + behind. If GPS times are needed, the Race Committee will contact you via email upon completion of the race**

TIME LIMIT: Six and one half (6½) hours from the start, provided that the first boat in your division finishes within five (5) hours from its start. If no boat in your division finishes within 5 hours the race will be abandoned for that division. Any boats completing the course after 6½ hours will be scored "DNF". This changes RRS Rule 35.

COMMUNICATION: RC will monitor Channel 72. Racing status may be reported via text to Pat @ 206 823 9340 Please check in with the RC at the starting area.

SCORING: Time-on-distance overall and by division.

MOORAGE + SOCIAL: If moorage is needed pre or post contact Ty @ tye.abrams@gmail.com for help with arrangements. Our goal is to have a post race fire and crockpot meal back at the club post race to help us wash down the annual bottle of Jim Depue Rum!

VTS Traffic: As recreational boaters and racers it is our responsibility to keep clear of commercial shipping lanes and traffic at all times. A helpful resource is attached here: [VTS Brochure](#).

RRS Rule 56.2 is changed to:

(a) A boat shall not impede, or present a threat of impeding, the safe passage of a commercial, government, or naval power-driven vessel.

(b) If a commercial, government, or naval power-driven vessel makes five short and rapid blasts on her whistle (a danger signal, see IRPCAS rule 34(d)) and the boat causing the danger signal can be identified, then the boat is subject to protest under rule 56.2(a).

(c) If an official complaint/action is lodged against a boat by a commercial, government, or naval power-driven vessel, by a pilot, by vessel traffic service (VTS), or by other local government authority, it shall be presumed that the boat has broken rule 56.2(a).

(d) The race committee will cooperate with and provide relevant information to VTS and other governmental authorities regarding investigations of boats impeding a commercial, government, or naval power-driven vessel."

DISCLAIMER: Competitors participate entirely at their own risk. The organizing authority will not accept any liability for material damage, sickness, personal injury, or death sustained in conjunction with or prior to, during, or after this event. Vessels shall comply with USCG safety regulations and should be prepared to sail in heavy wind, after dark, in the presence of both commercial and naval warfare traffic, and in the presence of large marine mammals. (stay away from whales, RCW 77.15.740). Competitors are recommended to wear PFD's. An operating VHF is recommended. An auxiliary motor is recommended.

Have a great time on the water !