

2021 Jim Depue Race: Sailing Instructions

February 20th, 2021

Presented by the Port Madison Yacht Club

Amendments to Original SI's: (Feb 18/21)

Change to Z Mark: The SI's are being changed for **Z Mark** to now be a permanent white cylindrical mark w/ orange reflective tape and PMYC indicated on it at ~GPS position (Lat 47.74' + Long -122.49') This changes the mark description from the original SI's and moves the mark position slightly Westward.

RULES: This event will be governed by this Notice of Race, the Sailing Instructions, the rules as defined in The Racing Rules of Sailing 2021 - 2024, and the Pacific Handicap Racing Fleet of the Northwest (PHRF-NW). Where there is a conflict this Notice of Race and the Sailing Instructions shall take precedence.

ELIGIBILITY AND ENTRY: The regatta is open to all boats. A PHRF-NW certificate is required for Divisions 1 – 4. Boats that are not members of the PHRF-NW may enter Division 5 and a club-rating will be assigned by RC

WSSA STANDARD INSTRUCTIONS: All WSSA standard instructions are available in the 2021 WSSA race book shall apply and be amended herein. WSSA Race Book available here: <https://wscyc.net/WSSA>

REGISTRATION: Registration is available via the PMYC home page: <https://www.portmadisonyc.org/> or via the racing / big boat racing tabs. Registration will close Feb 18th at 7 pm.

FEES: Early Bird Registration fees (before Feb 15th, 2020) are \$20. All registrations after Feb 15, 2020 are \$30.

STARTING SEQUENCE: There will be 5 Scoring Divisions and 3 Starts

Start #1: ~10:00 am - No. 3 Pendant

- **Division 5:** No Flying Sails / Cruising Class (All Ratings)

Start #2: ~10:05 am – No. 2 Pendant

- **Division 3: “Quaran-Team”** (Approx 116 and slower PHRF)
- **Division 4: “Short Handed”** (Approx 116 and slower PHRF)

Start #3 ~ 10:10 am – No. 1 Pendant

- **Division 1 “Quaran-Team”:** (Approx 115 and faster PHRF)
- **Division 2 “Short Handed”:** (Approx 115 and faster PHRF)

*“**Shorthanded**” = Single or Doublehanded Entries

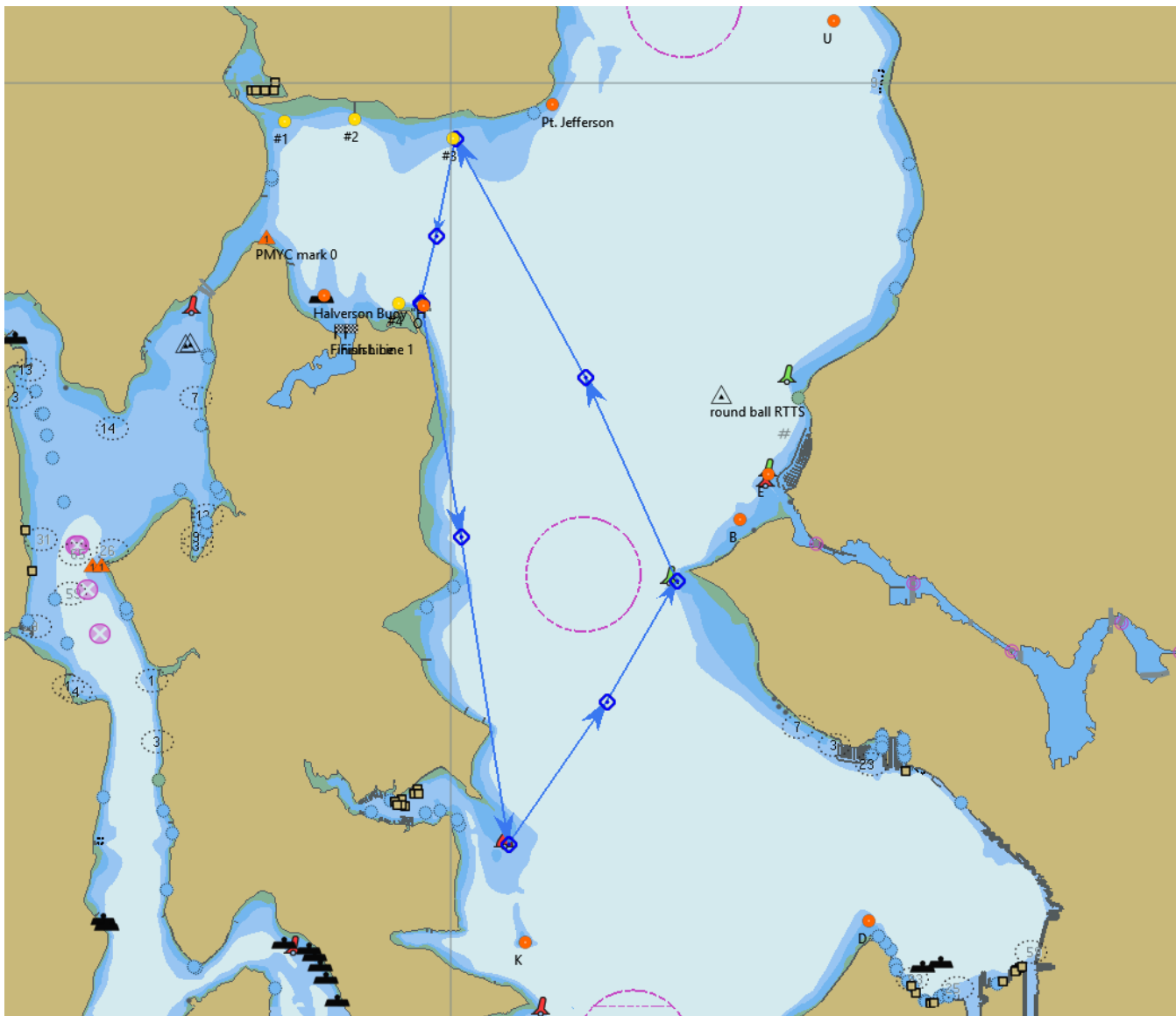
*“**Quaran-Team**” = Family based crews or crews that meet Washington State + Kitsap County's COVID regulations. <https://www.kitsapgov.com/Pages/coronavirus.aspx>

RACE START: Will be in the vicinity of Port Monroe and in accordance with Rule 26. First warning signal will be at ~10:00 am

RRS Provision for Shorthanded Division: RRS 52, Manual Power, is amended to include: Boats entered in the shorthanded division are allowed to use autopilot mechanisms for sail changes and other situations where having one crew member assigned to steering the yacht may compromise the safety of crew and craft.

COURSE:

- For **North** wind start: all marks to Starboard. **S - Z - W - E - S**
- For **South** wind start: all marks to Port. **S - E - W - Z - S**



SIGNALS:

- A **North** wind start will be indicated by a placard “A”.
- A **South** wind start will be indicated by a placard “B”.

DISTANCE: 16.5 nautical miles, course may be shortened at any mark without notification at prior mark.

DESCRIPTION OF MARKS:

- S - Start / Finish line off Point Monroe.
- E - Red Nun Buoy off Wing Point.
- W - West Point buoy.
- Z - permanent white cylindrical mark w/ orange reflective tape and PMYC indicated on it at ~GPS position (Lat 47.74' + Long -122.49') This changes the mark description from the original Sl's and moves the mark position slightly Westward.

SHORTENED COURSE: The days race may be shortened at any mark if conditions dictate. Please monitor VHF 72.

RACE TRACKING: All boats should download and run the **Kwindoo racing app** (IOS + Android). Remember to have a way of charging your phone / tablet as the app will need to be running throughout the race in order to track your progress/position. https://www.kwindoo.com/tracking/21104-pmyc-jim-depue?race_id=25587

Be aware there are 2 apps, "Tracking" and a "Live View". Each boat should have one device running the "Tracking" app to track you have your progress tracked **and to log finish times**. Select tracking within the **PMYC Jim Depue 2021** race and check to see you are being tracked in the app.

RACE FINISH: *There will likely be no finish boat on station.* The Finish line will be in a West (orange buoy) to East (yellow buoy) orientation in the proximity of the start line. It will be visible in the Kwindoo App which will also confirm when you cross this line by your GPS position. That said ***please also record your exact finish time via GPS time*** and email to tye.abrams@gmail.com upon completion of the race.

TIME LIMIT: 5 pm on the day of the race.

COMMUNICATION: RC will monitor Channel 72. Racing status may be reported via text to 360 775 6039. Please check in with the RC at the starting area.

SCORING: Time-on-distance.

MOORAGE: Unfortunately, the PMYC docks will remain closed to non-members as per Kitsap COVID Phase 2 regulations. Don't worry, we'll make up for it next year !

DISCLAIMER: Competitors participate entirely at their own risk. The organizing authority will not accept any liability for material damage, sickness, personal injury, or death sustained in conjunction with or prior to, during, or after this event. Vessels shall comply with USCG safety regulations and should be prepared to sail in heavy wind, after dark, in the presence of both commercial and naval warfare traffic, and in the presence of large marine mammals (stay away from whales, RCW 77.15.740). Competitors are recommended to wear PFD's. An operating VHF is recommended. An auxiliary motor is recommended.