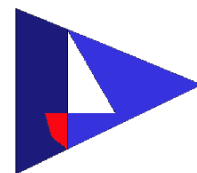


2022-23 PMYC Commodore's Challenge





2022-23 PMYC Commodore's Challenge : Sailing Instructions

Presented by the Port Madison Yacht Club

Overview: The 2022-23 PMYC Commodore's Challenge is a 11.4 NMi **Downwind** Time Trial between Yellow Channel separation buoy "SF" and "T" (see charts below).

RULES: This event will be governed by the Sailing Instructions, the rules as defined in The Racing Rules of Sailing 2021 - 2024, and the Pacific Handicap Racing Fleet of the Northwest (PHRF-NW). Where there is a conflict this Notice of Race and the Sailing Instructions shall take precedence.

ELIGIBILITY: The attempt must be made Between November 20st 2022 and October 31st 2023. This Time Trial is open to all boats with A valid PHRF-NW certificate. To participate in this time trial, Email Date, start time, Finish Time, And tracking data to commodore@portmadisonyc.org

START:

- North Wind: GREEN LINE - Start line runs along (47° 45.9095' N) parallel.
- South Wind: GREEN LINE - Start line runs along (47° 34.5557' N) parallel.

COURSE:

- For **North** wind: Course will head South
- For **South** wind: Course will head North

FINISH:

- North Wind: RED LINE - Finish line runs along (47° 34.5557' N) parallel.
- South Wind: RED LINE - Finish line runs along (47° 45.9095' N) parallel.

DISTANCE: 11.4 NMi

DESCRIPTION OF MARKS:

North Wind (see Charts below)

- GREEN LINE - Start line (47° 45.9095' N) (47.765158) (47° 45' 54.569" N)
- RED LINE - Finish line (47° 34.5557' N) (47.575929) (47° 34' 33.344" N)

South Wind (see Charts below)

- GREEN LINE - Start line (47° 34.5557' N) (47.575929) (47° 34' 33.344" N)
- RED LINE - Finish line (47° 45.9095' N) (47.765158) (47° 45' 54.569" N)
-

GPS TRACKING: Some kind of GPS tracking data is required to be eligible for participation. Please be sure you have an understanding of the working and sharing of the Track app of your choosing before attempting this challenge.

- Kwindoo - "Create Self tracking" data. This can be shared Via email.
- Chartplotter track data - Be sure you can download the data from you device before attempting.
- RaceQ's - RaceQ's records GPX data that can be shared and reviewed.

RECORDING: While Video recording of the attempt is not required. It is suggested if you have the equipment to record footage.

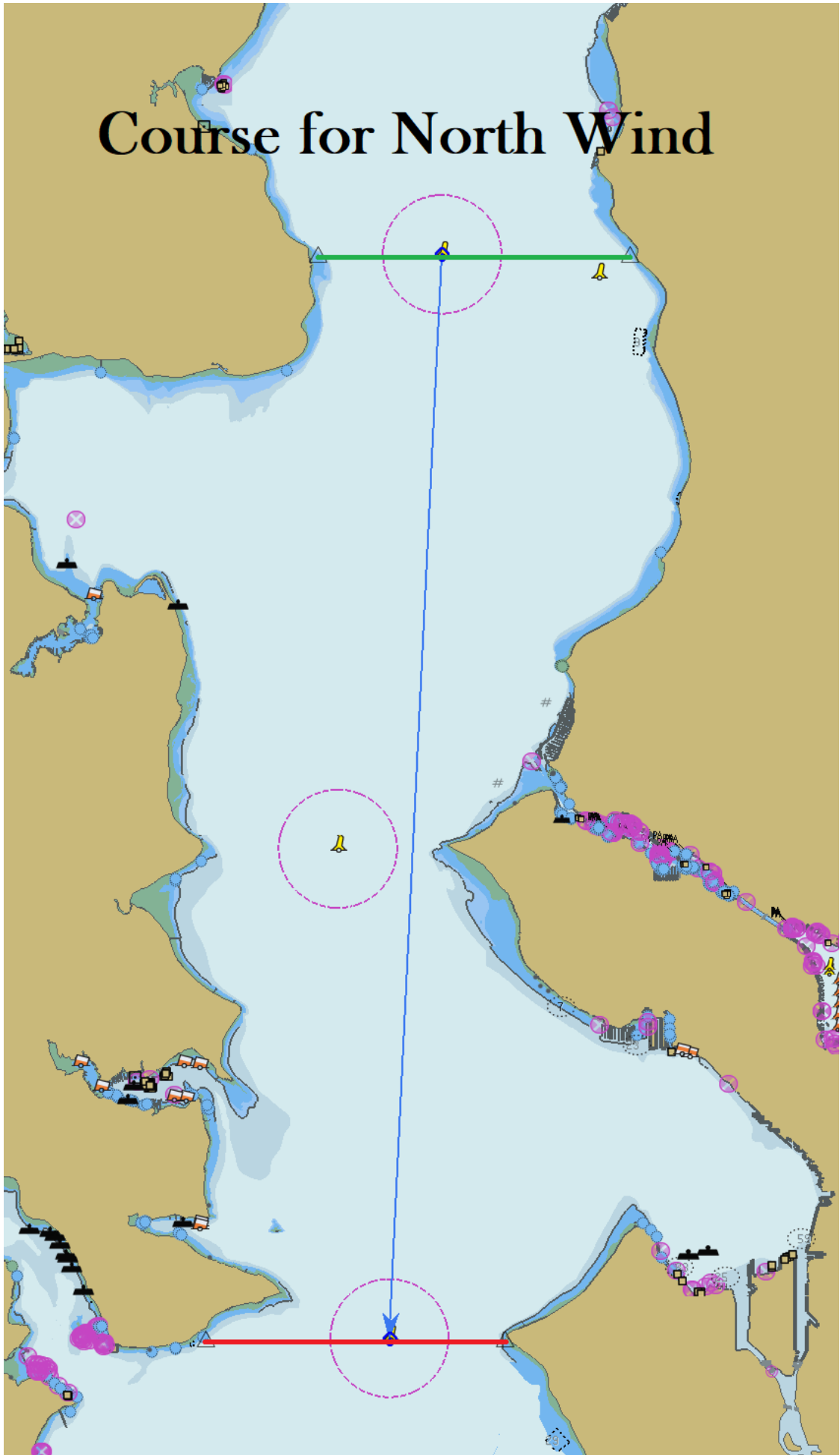
SCORING: Time-on-distance.

If any help is needed please contact Cranston phone or text (360.567.9995)

DISCLAIMER: Competitors participate entirely at their own risk. The organizing authority will not accept any liability for material damage, sickness, personal injury, or death sustained in conjunction with or prior to, during, or after this event. Vessels shall comply with USCG safety regulations and should be prepared to sail in heavy wind, after dark, in the presence of both commercial and naval warfare traffic, and in the presence of large marine mammals (stay away from whales, RCW 77.15.740). Competitors are recommended to wear PFD's. An operating VHF is recommended. An auxiliary motor is recommended.

Competitors are reminded of Rule 10 of the International and Inland Rules to Prevent Collisions at Sea (COLREGS) requires that no power-driven vessel less than 20 meters (66 feet) in length, and no sailing vessel (of any size) may impede the safe passage of a power-driven vessel following a Vessel Traffic System (VTS) Lane.

Course for North Wind



Course for South Wind

